

Announcing Brand New Project | Re_ by STPI

Re_Visit, Re_View and Re_Connect
with us at ArtSpace @ HeluTrans



Re_

On-site: Dates, Time and Venue

18 to 30 June 2021

2 to 14 July 2021

16 to 26 July 2021

11.00AM to 7.00PM daily

ArtSpace @ HeluTrans
39 Keppel Road, #01-05
Tanjong Pagar Distripark
Singapore 089065

Online

STPI website and Artsy (available
through STPI website)

www.stpi.com.sg

Re_ by STPI is a series of multi-platform viewing rooms. It brings together a selection of works from STPI's inventory, placing them in new constellations for us to relook at them in fresh contexts. With a different focus for each iteration, the presentations will be refreshed regularly throughout the year. In the spirit of re-presenting these artworks in new situations, our first three viewing rooms will take place at the dynamic **ArtSpace @ HeluTrans**.

We invite you to come down, or visit us online, to Re_Visit, Re_View and Re_Connect with us.



Pinaree Sanpitak, ***Breast Talks 9***, 2018, Gold leaves, etching and screenprint on gampi paper embedded in STPI handmade mulberry paper, 70.5 x 89.5 cm.
© Pinaree Sanpitak / STPI. Photo courtesy of the Artist and STPI.

Re_Present

In material, immaterial: Jane Lee, Pinaree Sanpitak, Shirazeh Houshiary

18 June to 30 June 2021

The inaugural *Re_* viewing room features the works of three influential female artists, which takes inspiration from their natural surroundings. In their conceptual gestures, no distance is carved between nature and culture. *In material, immaterial* invites you to reconnect with the experience of encountering the world, and ourselves in it.

See *Artists & Artworks* section for more information.



Srihadi Soedarsono, **Horizon - The Morning Spirit**, 2005, 8-colour woodcut, lithograph, screenprint on off-white handmade STPI paper, 127 x 101.6 cm.
© Srihadi Soedarsono / STPI. Photo courtesy of the Artist and STPI.

Re_Visit

Close to Home

2 July to 14 July 2021

On-site and online: Jumaldi Alfi, Eko Nugroho, Handiwirman Saputra, Melati Suryodarmo, Entang Wiharso

Online exclusive: Srihadi Soedarsono, Sunaryo Soetono

Bringing together eminent artists in the Indonesian art scene, all of whom are widely recognised, *Close to Home* shows the dynamic expressions from this vibrant archipelago. Through the works of seven diverse practitioners, a whole host of concerns is articulated: from the personal to the political, from being rooted in the cultural milieu to universally resonant philosophical ponderings. In this manner, *Close to Home* is an ode to the distinct practices and utterances of the country's energetic artistic landscape.

See *Artists & Artworks* section for more information.



Hema Upadhyay, *Universe Revolves On (XIII)*, 2008, Mixed media assemblage of STPI handmade paper, flocking, photographs, paint and wood, 190.5 x 281.5 x 42.5 cm.
© Hema Upadhyay / STPI. Photo courtesy of the Artist and STPI.

Re_Examine

Neurotic Metropolis: Hema Upadhyay, Shambhavi Singh, Thukral & Tagra

16 July to 26 July 2021

Three Indian artists reveal the complexities of contemporary globalisation, where its current manifestation promotes dreams of modernity and a utopian urban lifestyle. The featured artists upturn this motion by critically examining the stark realities of this phenomena via scrutinising globalisation's impact on India.

See *Artists & Artworks* section for more information.

In material, immaterial



Jane Lee, *Life Series - One Ocean #ii*, 2020, UV inkjet print and laser printed gampi collage on paper, stacked, 35 x 55 x 12 cm.
© Jane Lee / STPI. Photo courtesy of the Artist and STPI.

Jane Lee

b. 1963, Singapore

- Noted for her unconventional methods and approach towards process, materials and techniques
- At STPI, Jane Lee invites figurative forms into her art-making for the first time; the bird becomes a recurring imagery, emblematic of freedom in flight
- STPI will debut Jane Lee's latest body of work created at our workshop, which continues the nature imagery as well as her inventive use of paper for In material, immaterial



Pinaree Sanpitak, *Breast Talks 8*, 2018, Collagraph on paper, gold leaves, etching and screenprint on gampi paper embedded in STPI handmade mixed ebony fruits and linen paper, 107.5 x 107 cm.

© Pinaree Sanpitak / STPI. Photo courtesy of the Artist and STPI.

Pinaree Sanpitak

b. 1961, Bangkok, Thailand

- One of the most established Thai conceptual artists of her generation
- Pinaree Sanpitak brings her well-known breast-stupa motif with her to STPI – the motif emanates suggestions of the bodily flesh, cultural conditions, earthliness and cosmology
- With the breast-stupa and other bodily shapes configured in a number of ways for her stunning printworks, there is a fluidity in interpretation, prompting us to be in deeper engagement with the world we inhabit



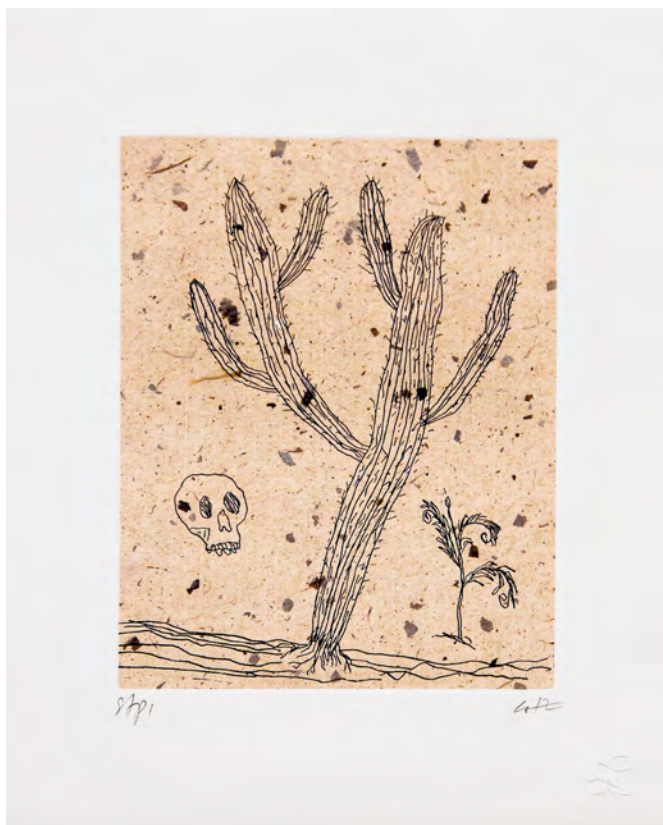
Shirazeh Houshiary, *The River is Within Us* series, 2015 at *Turning the Axis of the World* (2020).
Image courtesy of STPI – Creative Workshop & Gallery, Singapore.

Shirazeh Houshiary

b. 1955, Shiraz, Iran; lives and works in London, UK

- Shirazeh Houshiary rose to prominence as a sculptor at the forefront of Britain's young generation of sculptors in the 1980s alongside Anish Kapoor, Richard Deacon and Tony Cragg
- The artist created two main body of works at STPI; the first, *Migrant*, likens the migratory quality of rain trees in Singapore to human migrants, so as to emphasise the organic aspect of migration
- The second body of work, *The River is Within Us*, uses single words selected from the Hebrew, Sanskrit, Arabic, Mandarin and Latin languages to challenge our perception of similarities and differences between cultures, with the ultimate emphasis on the absolute interconnectedness of humanity

Close to Home



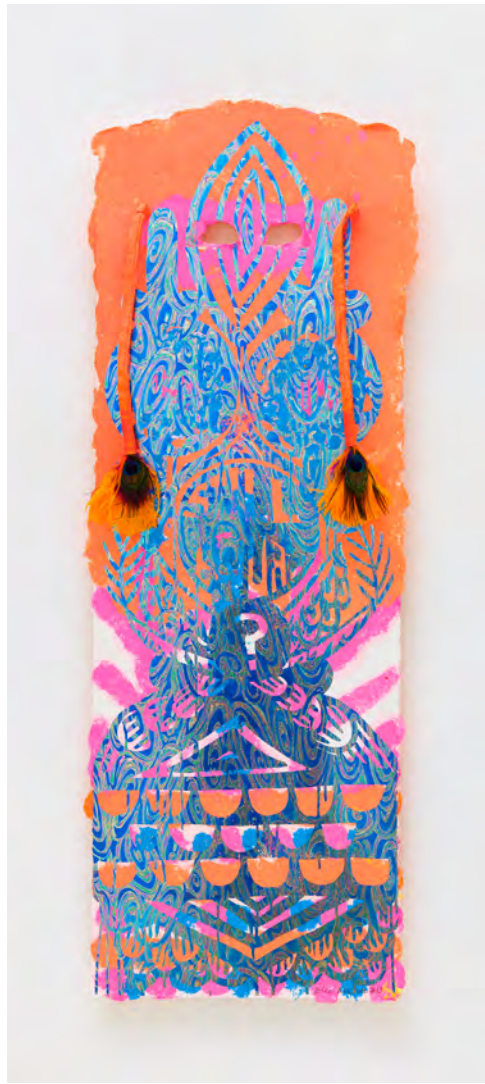
Jumaldi Alfi, **Journey #02**, 2012, Hard ground etching and chine colle with chiri bark kozo paper on Fabriano 100% cotton paper, 29 x 23 cm.

© Jumaldi Alfi / STPI. Photo courtesy of the Artist and STPI.

Jumaldi Alfi

b. 1972 in Lintau, West Sumatra, Indonesia

- An influential artist in the Indonesian contemporary scene, Alfi's paintings are known for his compelling personal iconography of visual signs which reflects both existential and spiritual experiences
- He is also the co-founder of Jendela Art Group, one of Indonesia's most prominent art collectives
- At STPI, Alfi draws on a scope of references from text to empirical objects of the natural world, to Renaissance paintings and his own memories; the effect of his work being at once mysterious and intimate



Eko Nugroho, *Still Equal?*, 2013, Paper mask with screen print, metal foil, linen, found object, coloured shaped STPI handmade paper, 109 x 41 x 3 cm.
© Eko Nugroho / STPI. Photo courtesy of the Artist and STPI.

Eko Nugroho

b. 1977, Yogyakarta, Indonesia

- Eko Nugroho has been recognised as one of the most popular and accessible interpreters of the contemporary experience
- At STPI, Nugroho produced a range of wearable full-faced masks that depicts responses to his experiences in Singapore and observations of its socio-political conditions
- The mask itself carries forward his exploration of it as an image, object, second skin, and the notion of “masking” as a form of concealment or disguise



Handiirman Saputra, *Ujung Sangkut Sisi Sentuh I #04 / Suspended Forms #04*, 2012, Paper pulp drawing with translucent abaca paper, 128cm (d). © Handiirman Saputra / STPI. Photo courtesy of the Artist and STPI.

Handiirman Saputra

b. 1975, Bukittinggi, West Sumatra, Indonesia; lives and works in Yogyakarta, Indonesia

- An adept painter and sculptor, Saputra straddles comfortably between two- to three-dimensional mediums, questioning viewers' perspectives of seeing the world around them
- He is also the co-founder of Jendela Art Group, one of Indonesia's most prominent art collectives
- In bringing his unusual, instinctive and tactile way of working, the artist, in collaboration with STPI's workshop team, transformed the conventional use of paper by exploring its rich physical potential as a medium and object.

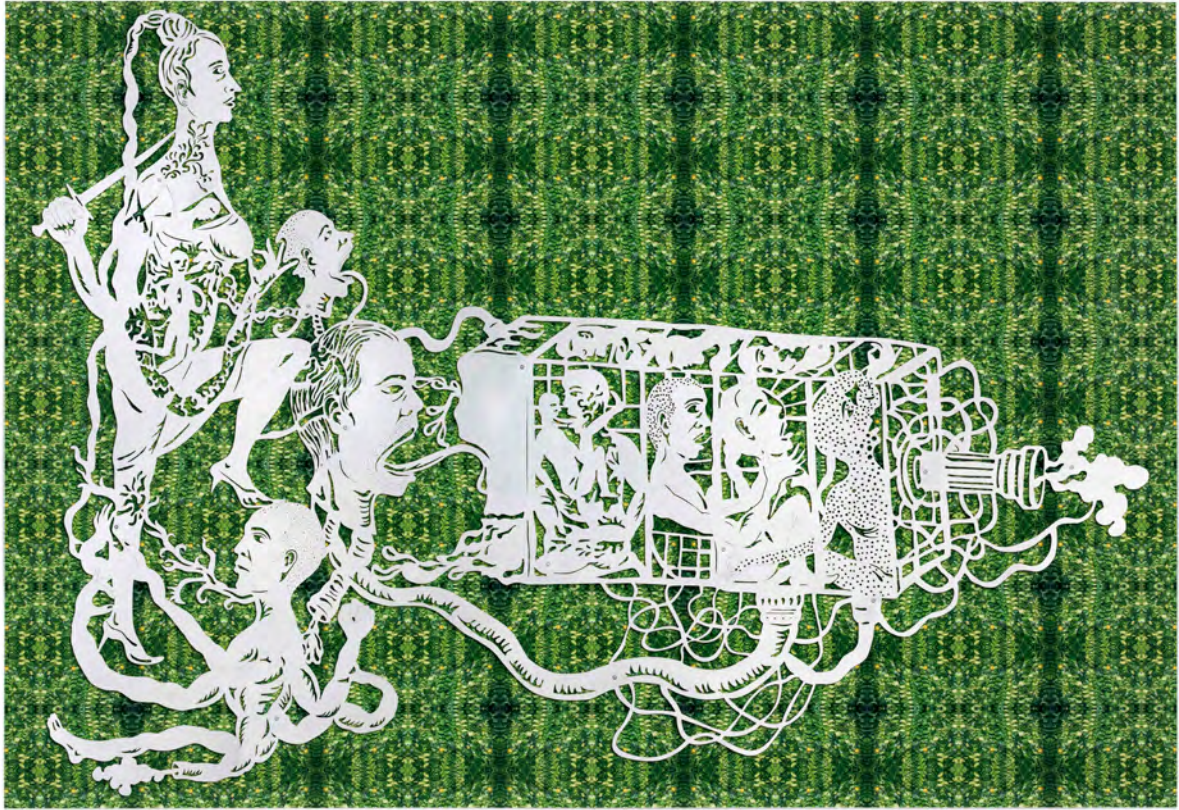


Melati Suryodarmo, **FAUST 3**, 2018, Charcoal powder rubbed into STPI handmade paper, 39 x 49 cm.
© Melati Suryodarmo / STPI. Photo courtesy of the Artist and STPI.

Melati Suryodarmo

b. 1969, Surakarta, Indonesia; lives and works in Gross Gleidingen, Germany and Surakarta, Indonesia

- Best known for her performance-based works, the artist's oeuvre deals with the relationship between a human body, the culture it belongs to and a constellation of its lived conditions
- A bold leap from her distinctively performance-based oeuvre, Suryodarmo's new explorations in print and paper during her residency at STPI are examinations into the volatile relationship between matter and memory
- A particular inspiration is her own childhood familial homes which have since been demolished or abandoned

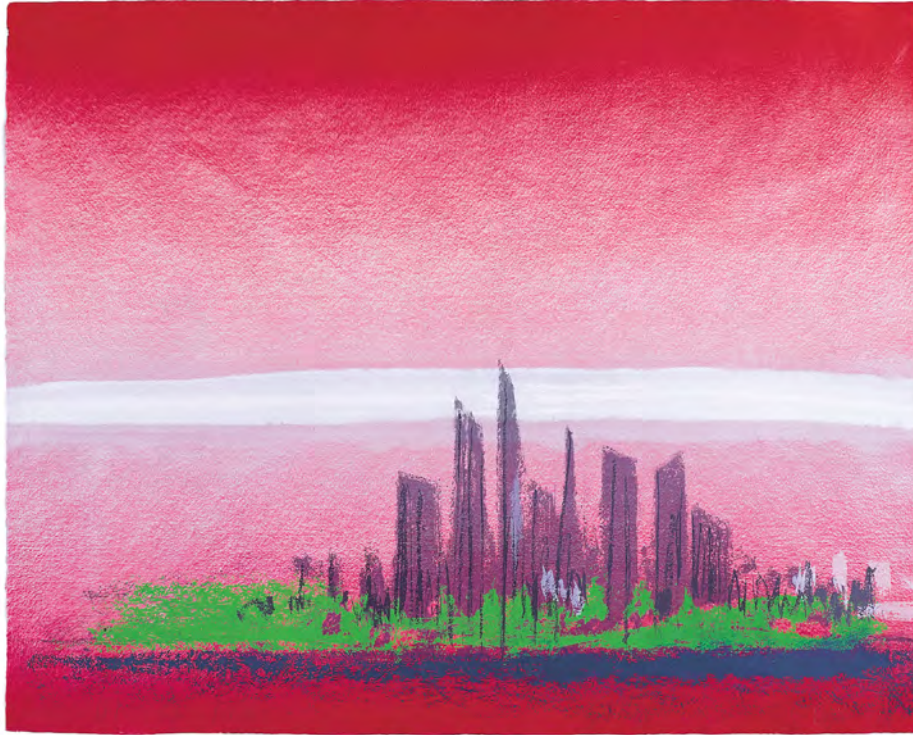


Entang Wiharso, ***Shelter: Forest of Eyes***, 2015, Aluminium sheet, laser cut, C-type print, 127 x 184 x 3 cm.
 © Entang Wiharso / STPI. Photo courtesy of the Artist and STPI.

Entang Wiharso

b. 1967, Tegal, Central Java, Indonesia; lives and works in Rhode Island, United States and Yogyakarta, Indonesia

- Universally resonant yet rooted in cultural milieu, Entang Wiharso creates provocative works that speaks volumes about the human condition
- At STPI, Entang delivers personal reflections and social critique by integrating Javanese narrative tools of wayang kulit with contemporary materials
- The end results speak to issues of power, loss and love to broader categories of ideology, philosophy and identity



Srihadi Soedarsono, *Horizon - The Energy of Singapore*, 2005, 10-colour lithograph, screenprint, stencil on stained, off-white handmade STPI paper, 102 x 127 cm. © Srihadi Soedarsono / STPI. Photo courtesy of the Artist and STPI.

Srihadi Soedarsono

b. 1931, Surakarta, Central Java, Indonesia; lives and works in Bandung, Indonesia

- One of the greatest masters of modern Indonesian painting, Soedarsono has had a long, prolific career in the artistic world
- The artist is well known for his expressionistic interpretations of vast landscapes and glorious horizons that inspire feelings of spirituality, which are often inspired by sites from Indonesia itself
- At STPI, the artist works with various printing techniques such as lithography and screenprint that continues his studied observations of the monumental Borobudur and the horizons of Java, alongside inspirations from the environment in Singapore



Sunaryo Soetono, ***Fatum 3***, 2007, Collage of embossed paper, pigment stained paper and paper pulp on pigment stained STPI handmade paper, 168.5 x 132.7 cm. © Sunaryo Soetono / STPI. Photo courtesy of the Artist and STPI.

Sunaryo Soetono

b. 1943, Banyumas, Central Java, Indonesia

- The eminent artist works across a variety of mediums: painting, sculpture, printmaking, installation, as well as urban monuments and several murals in public spaces in Indonesia
- He is also the founder of Selasar Sunaryo Art Space
- His works at STPI focuses on the tensions between his personal experiences as a human being and his social experiences as a Javanese through a range of imageries including reworking his Batik motifs, relating to his belief that culture always changes

Neurotic Metropolis



Hema Upadhyay, *Universe Revolves On (XVI)*, 2008, Mixed media assemblage of pigmented STPI handmade paper, flocking, photographs and wood, 169.5 x 262.9 x 29.2 cm. © Hema Upadhyay / STPI.
Photo courtesy of the Artist and STPI.

Hema Upadhyay

1972–2015, lived and worked in Mumbai, India

- One of India's illustrious contemporary artists, Upadhyay returned to printmaking after a decade's hiatus at STPI
- She observed Mumbai as a neurotic metropolis and questioned the meaning of home in the face of India's rapid urbanisation
- In particular, she looked at the thousands who come to the city to pursue their aspirations only to be confronted by the random harshness of its social and political complexities



Shambhavi Singh, *Griha Do / Sanctum (II)*, 2011, Pigmented paper pulp with STPI handmade cast paper pulp, 188 x 144.78 x 5.08 cm.

© Shambhavi Singh / STPI. Photo courtesy of the Artist and STPI.

Shambhavi Singh

b. 1966, Bihar, India; lives and works in New Delhi, India

- The artist's paintings, sculptures and installations are characterised by themes of self-exploration, survival and livelihood
- At STPI, she translates her concepts inspired by the frugal lives of farmers from her native land Bihar, India into powerful, minimalist works using paper
- Her works express the transient realities of life in a fickle era of materialistic excess



Thukral & Tagra, *(Home delivery) Six days a week*, 2009, Lithography, screen print, collage, hand cut, hand paint, Misu paper, air brush, laser cut acrylic constructed on laminated STPI handmade stencil shaped paper, cast paper, pigmented paper pulp, and mechanised acrylic structure, 190 x 154 x 18 cm.
© Thukral & Tagra / STPI. Photo courtesy of the Artists and STPI.

Thukral & Tagra

b. 1976, Jalandhar, Punjab, India & b. 1979, New Delhi, India respectively; based in New Delhi, India

- Thukral & Tagra blur the lines between fine art and popular culture, product placement and exhibition design, artistic inspiration and media hype
- Playful and humorous, their works comment on the globalisation of consumer culture and the repercussions of this as it is being experienced in India today

About STPI

STPI Gallery fosters the exchange of ideas in contemporary art with its diverse exhibitions and public programme. The gallery hosts specially curated exhibitions of works produced in the STPI Creative Workshop and regularly participates in international art fairs. This enables it to nurture and sustain local and international interest in both its residency artists as well as the mediums of print and paper.

STPI is a creative workshop and contemporary art gallery based in Singapore. Established in 2002, STPI is committed to promoting artistic experimentation in the mediums of print and paper, making it one of the most cutting-edge destinations for contemporary art in Asia. STPI sits alongside National Gallery Singapore and the Singapore Art Museum as part of the national Visual Arts Cluster of leading institutions in the region.