

STPI
Singapore

FOLLOW

STPI
CREATIVE WORKSHOP & GALLERY



STPI at Art Basel 2016. Photo: © Timothée Chambovet & Ocula.



Address & Hours

Map

Contact Gallery 

Share

Follow Gallery 

Art Basel 2016, Booth E2

16 Jun - 19 Jun 2016

Press release courtesy of STPI.

STPI is an internationally renowned space in Singapore with a creative workshop focusing on innovative print and paper techniques. We offer a dynamic residency programme for leading artists from around the world, where they can experiment and push the boundaries of artistic creation with alternative methods and materials. The combination of a critically acclaimed residency programme, gallery and exceptional workshop expertise makes STPI one of the most cutting-edge destinations for contemporary arts in Southeast Asia.

Close

SELECTED WORKS EXHIBITED



JANE LEE
Am I



JANE LEE
Am II



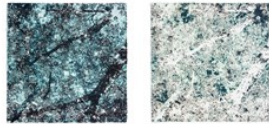
JANE LEE
Coiling I



JANE LEE
Just a moment IV



JANE LEE
Just a moment V



SHIRAZEH HOUSHIARY
Migrant No II



RIRKRIT TIRAVANIJA
Moon rise - Time is setting - Tomorrow never arrives (detail)



HAEGUE YANG
Non-Folding - Dragged Geometry #1



HAEGUE YANG
Non-Folding - Geometric Tipping #43



HAEGUE YANG
Non-Foldings - Cosmic Explosion #4



SAM DURANT
Proposal for a Map of the World



RIRKRIT TIRAVANIJA
Seventh chapter: to all appearance, the traveler acts like a mediumistic being who, from the

*labyrinth beyond time
and space, seeks his way
out to the clearing, the
math compass helps*



CARSTEN HÖLLER
*Slide House Project (Cedi
House, Accra)*



CARSTEN HÖLLER
*Slide House Project
(Central Business
District Airport Tower
House, Singapore)*



CARSTEN HÖLLER
*Slide House Project
(Central Business
District Corner House,
Singapore)*



CARSTEN HÖLLER
*Slide House Project
(Central Business
District High Rise,
Singapore)*



CARSTEN HÖLLER
*Slide House Project
(River Reflective High
Rise, Singapore)*



CARSTEN HÖLLER
*Slide House Project
(Round Tower,
Brazzaville)*



RIRKRIT TIRAVANIJA
*The hair that can predict
the past, the present and
the future*



RIRKRIT TIRAVANIJA
*The Time Travelers gage,
(end)gage A
transformer designed to
utilize the slight, wasted
energies such as: The
excess of pressure on an
electric switch.*



RIRKRIT TIRAVANIJA
*Time anarchy comes in
small measured meters,
matters, when
oppression (clock) is
apparently appearing*



RIRKRIT TIRAVANIJA
*Untitled (The double
moon at noon, Darwin's
dilemma)*

WORKS AT UNLIMITED



HO TZU NYEN
The Nameless