

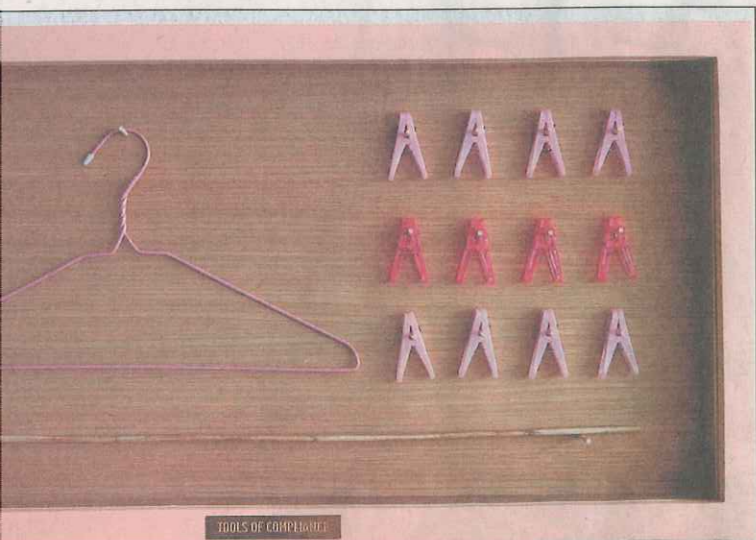


DRAWING PARALLEL (left)

Artist: Tang Ling Nah, 42

What: The act of drawing is taken beyond its conventional meaning by Tang, who usually works with charcoal and paper, in this movement-based performance art piece. It incorporates an ephemeral installation of recycled paper. The work is inspired by her observation of how her body moves when she works on large-scale charcoal drawings. It seeks to draw a parallel between drawing, particularly the act of erasure, and everyday movements of the body. Tang will collaborate with dancers Eng Kai Er, 29, Adele Goh, 23, and Bernice Lee, 26, as well as sound designer Ho Wen Yang, 31, and violinist Audrina Goh, 20.

Where: Aliwal Arts Centre, 28 Aliwal Street, Level 1, multi-purpose hall
When: Jan 17, 7 to 8pm, and Jan 18, 6 to 7pm



SEA STATE 3: INVERSION (left)

Artist: Charles Lim, 40

What: In this series of recent works in video, photography



MOVING FOREST (top)

Artist: Han Sai Por, 70

What: Better known as an artist who works with stone, Han shows off her versatility as a sculptor with an exhibition that

LOCALS GO SOLO

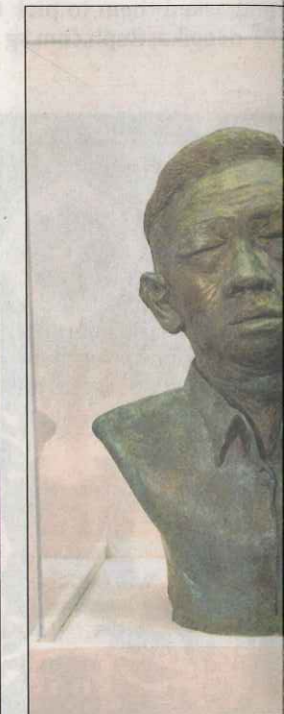


100 FACES (right)

Artist: Jane Lee, 50

What: Lee, who has herself with signature paint to form intense shows a bold new side. Drawing from Eastern idea that less is more are driven by a desire her previously built-up

The series Portrait, for example, feature painted have been gouged or a riot of hues beneath.



IN THE DEADPAN (right)

Artist: Tan Wee Lit, 31

What: Tan's first solo exhibition features nearly 100 self-portraits that examine the transcendence of mortality in his absurd, tragicomic tone. For example, the b